



FLORAL

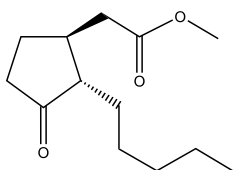
CHEMICAL SYNTHESIS

CAS NUMBER 0024851-98-7
REACH NUMBER 01-2119493355-31
FEMA NUMBER 3408

BIODEGRADABILITY Readily

GREEN CHEMISTRY SCORE 70 - 100%

Cyclopentaneacetic acid, 3-oxo-2-pentyl-, methyl ester



OLFACTIVE DESCRIPTION

An elegant, transparent floral, jasmine note with citrus freshness.

HEDIONE® develops a beautiful natural smoothness and radiance in a wide range of perfume types.

PERFUMERY USAGE

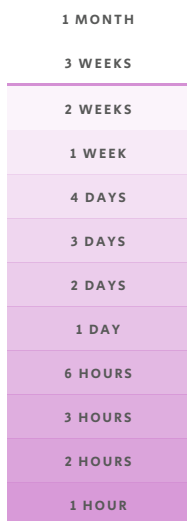
Besides use in jasmine and its floral family, it gives original effects in virtually all fragrance types.

HEDIONE® exalts floralcy in a perfume. It does not necessarily increase strength, but does bestow presence, noticeability, and diffusion. These three key words all provided by a material that is by itself quietly understated and easily underestimated.

Used at a concentration of between 2 and 15%, but can be used at levels of 35% and above.

TENACITY

Lasts 2 weeks
on a smelling strip



PHYSICO-CHEMICAL PROPERTIES

LOG P (MEASURED) 2.92

APPEARANCE LIQUID

FLASHPOINT >100°C

VAPOUR PRESSURE 0.09 Pa at 20°C

MOLECULAR WEIGHT 226

BOILING POINT -

STABILITY & PERFORMANCE

RECOMMENDED APPLICATIONS	STABILITY	CONCENTRATION AVG - MAX	SUBSTANTIVITY & REMARKS			
FINE FRAGRANCES		12% - 38%	TOP AND HEART NOTE			
SHAMPOO		8% - 20%	WET		DRY	
SHOWER GEL		8% - 23%	BLOOM			
SOAP		5% - 17%	FOAM		DRY HAND	
DETERGENT		3% - 13%	WET		DRY	
SOFTENER		4% - 13%	WET		DRY	
APC		2% - 8%				
CANDLE		5% - 17%	COLD WAX		BURNING	

DID YOU KNOW ?

HEDIONE®, cornerstone of an entire family of molecules, was discovered by Firmenich scientist, Dr. E. Demole in 1958 as part of the methyl jasmonate synthesis.

HEDIONE® brings to mind the old adage, "He who wishes to be heard will always whisper".